

micro-wave-scan 3

Orange Peel and DOI measurement on curved and small parts

The new micro-wave-scan 3 has a modern and ergonomic design with large color touch display as you know it from your smartphone. Introducing state-of-the-art chip technology to calculate waviness scales in no time - accelerating the measuring time. Even with these advanced powerful chips, the new micro-wave-scan 3 still has an amazing long battery life to measure many parts in the production line or out in the field. For the first time the new micro-wave-scan 3 shows Pass/Fail judgement right on the display. Go digital with the powerful smart-chart for SPC data analysis and to set up a standardized global QC management system.



Ergonomic design fits in the palm of your hand

The design is optimized for small and curved surfaces like bumpers, gas tank doors, mirror housings, door handles, decorative trim, or motorcycle parts - small and light weight for easy operation with one hand.

- Curvature > 300 mm
- Minimum sample size: 25 mm x 40 mm
- Selectable scan length 20, 10 or even 5 cm
- Measurement area: 4 mm x scan length
- DOI measurement possible without scanning the surface
- Good correlation to wave-scan 3 dual, the appearance standard in the automotive industry



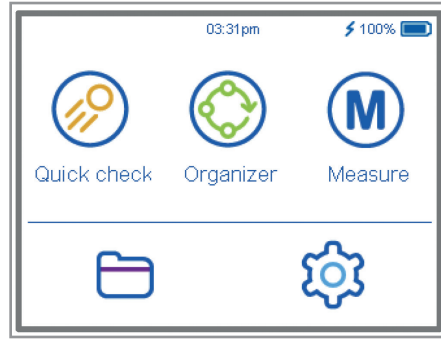
Brilliant color touch display

The capacitive display technology provides a state-of-the-art haptic touch. Quick and easy operation including swipe functionality – no need of a stylus. The display automatically rotates with you – so it is always in the right position.

The new design allows an extra-large, easy-to-read display with colorful icons for an intuitive menu navigation:

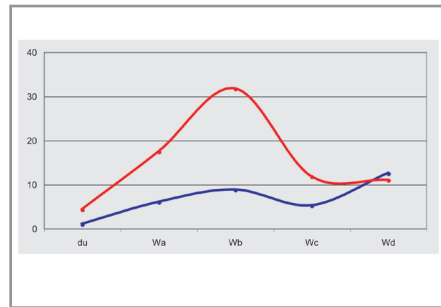
- Quick check: Just measure without saving
- Measure: Collect and automatically save data by using standards with defined scales, statistics and limits
- Organizer: Select a customized sampling procedure with standard colors and limits to measure a car body
- Data View: View your saved measurements
- Configuration: Customize your “Quick check and Measure” mode for your application

With standards created in smart-chart, the new micro-wave-scan 3 shows Pass/Fail judgement right on the display.



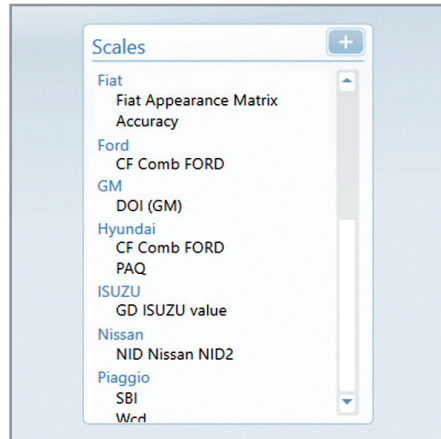
Objective and reliable appearance data

Surface appearance changes with the size and distinctness of wavy structures when perceived at different distances. The micro-wave-scan 3 scans the optical profile of a high gloss surface using a laser light source. The optical profile is analyzed with 4 wavelength ranges from 0.1 - 10 mm (Wa-Wd). In addition, a camera image is taken with the focus on a reflected image to evaluate the image forming qualities of the surface caused by structures < 0.1 mm (du). Thus, it simulates our visual appearance perception at a close distance (~ 30 cm) and far distance (~ 2-3 m). The result is a “structure spectrum” which is the basis to calculate customer specific scales for orange peel and DOI.



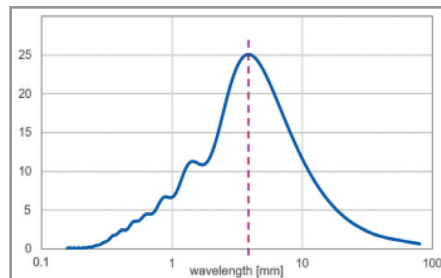
micro-wave-scan talks your language – company specific scales

The wave-scan family is the standard to objectively quantify the harmony of a class A surface finish in regard to orange peel and DOI used by all automotive, truck, aircraft, motorcycle, boat and yacht companies. Depending on the OEM's visual appearance evaluation customer specific scales with different target values have been developed over the years. These company specific scales are an objective check to ensure company specifications are met and eliminate heated discussions between automotive producers and their suppliers.



Dominant wavelength and amplitude

A new way was developed in cooperation with VW/Audi to filter the optical profile using Fast Fourier Transformation (FFT) to determine dominant waviness sizes and their intensity levels. In visual studies it became obvious that observers can distinguish samples based on the dominant wavelengths. micro-wave-scan - your QC tool to check specifications and troubleshooting guide to analyze and optimize the surface quality based on material and process parameters.



Always ready with smart docking station

The new generation optimizes the energy consumption of optical and electronic components in combination with the firmware. Thus, a long battery life is achieved: Up to 1000 readings can be taken with one charge.

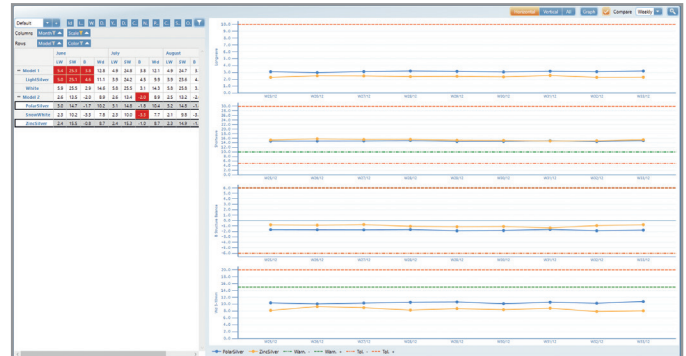
- The charging takes place in the newly designed docking station – park and charge at the same time.
- The docking station houses a second battery pack which is always fully charged. The status of both batteries is displayed with LED indicators.
- Transfer your measuring data easily via docking station.
- Optionally, automatic data transfer through Wi-Fi can be activated on request.



smart-chart for Data Analysis

Go digital with the powerful smart-chart for SPC data analysis and to set up a standardized global QC management system.

- smart-chart includes a powerful standard management for defining scales and PASS/FAIL limits. For standardized sampling process so called "Organizers" are set up to define clear sample identification and a menu guided operation using your own schematics.
 - The measured data is saved in a SQL database which allows handling of large data sets over time. This reliable database type ensures full network and server compatibility.
 - Filter your database based on your specific criteria:
 - Example: Select a certain color, a certain time range or all "failed – red color coded" test series for further analysis.
 - The drill-in function shows history trend of the last 20 measurements of the same model, color and painting line. Just click on any point in the data table or graph!
 - smart-chart offers a dynamic print layout allowing you to create your own reports.
 - Data can be easily shared within the supply chain by extracting mini databases which can be combined with other databases.
- With smart-process, you'll know where you are, where you're going, and how to get there.





Catalog Number	7420
Short Description	micro-wave-scan 3
Application	High Gloss Surfaces (du < 40, linear range)
Structure Spectrum	du: < 0.1 mm Wa: 0.1 to 0.3 mm Wb: 0.3 to 1 mm Wc: 1 to 3 mm Wd: 3 to 10 mm
Repeatability (Std. Dev.)	8% or > 0.8
Reproducibility (Std.Dev.)	12% or > 1.2
Object Curvature	radius > 300 mm
Scan Length	20 cm (du, Wa...Wd, LW, SW, DOI) 10 cm (du, Wa...Wd, LW, SW, DOI) 5 cm (du, Wa...Wd, LW, SW, DOI) 0 cm (du, Wa, Wb, DOI)
Resolution	375 points/cm
Min. Sample Size	25 mm x 40 mm
Measurement Area	4 mm x scan length
Light Source	Laser diode, LED
Laser Energy	< 1 mW (Laser class 2)
Memory	10.000 readings in 1000 test series
Interface	USB port, WiFi optionally
Languages	DE, EN, ES, FR, IT, JA, RU, ZH
Power supply	rechargeable Li-Ion battery pack, up to 1000 readings depending on usage
Weight	0.32 kg 0.7 lb
Operating temperature	0 - 40 °C 50 - 104 °F
Storing temperature	0 - 60 °C 32 - 140 °F
Relative humidity	up to 85% at 35°C (95°F), non-condensing
Dimensions: L x W x H	8.4 x 4.4 x 11.5 cm 3.3 x 1.7 x 4.5 in

Delivery Content

Instrument, Checking tile (4829), Docking station with USB-cable (4857), smart-process software with 2 licenses for download (4831), 2 rechargeable battery packs (4827), Battery holder for AA batteries, 2 Batteries, Certificate, Manual, Carrying case and belt case, 1-day training

System Requirements

Operating system: Windows® 10 1607 or later
Hardware: i5 2.5 GHz; i9 recommended, or equivalent (x86 & x64 architecture only)
Memory: 16 GB RAM, 32 GB recommended
Free hard-disk capacity: 4 GB during installation
Monitor resolution: 1920 x 1080 pixel; 4K recommended
Interface: free USB-port

Catalog Number	Short Description	Delivery Content
7421	Li-Ion battery pack for micro-wave-scan 3	
7422	Docking Station micro-wave-scan 3	Docking station Li-Ion battery pack (7421) USB-cable
7423	Checking tile for micro-wave-scan 3	
4831	smart-process	Software with 2 licenses for download