



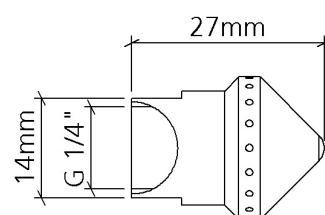
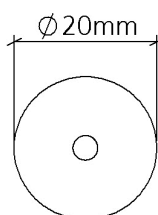
## AIR NOZZLE SILVENT 915-90

Item number: 09150149344, 09150249344

SILVENT 915-90: with an outlet angle of 90°. Otherwise, the same performance as 915.

### Technical data

Replace open pipe Ø (mm)	6
Blowing force (N)	5.5
Air consumption (Nm <sup>3</sup> /h)	38
Sound level (dB(A))	86
Nozzle technology	Hole
Material (nozzle)	1.4305 (303)
Connection	G 1/4"
Connection type	Female
Weight (g)	20
Max temp (°C)	400
Max op. pressure (MPa)	1.0



### Benefits when replacing an open pipe

Replace open pipe Ø (mm)	6	
Noise reduction	16 [dB(A)]	67%
Energy savings	29 [Nm <sup>3</sup> /h]	43%

Material specification: EN 1.4305