



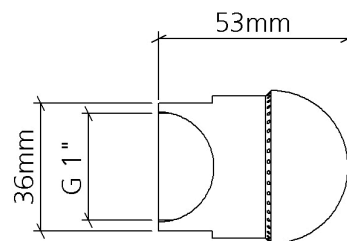
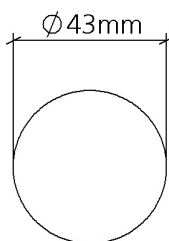
AIR NOZZLE SILVENT 912

Item number: 09120149207, 09120249207

SILVENT 912: larger variation of 910. Manages blow-out of pipe with diameters from 75 mm (3") up to 400 mm (16"). 1" female connection thread. Blowing force 13.2 N (2.9 lbs).

Technical data

Blowing force (N)	13.2
Air consumption (Nm ³ /h)	91
Sound level (dB(A))	90
Nozzle technology	Hole
Material (nozzle)	1.4305 (303)
Connection	G 1"
Connection type	Female
Weight (g)	220
Max temp (°C)	400
Max op. pressure (MPa)	1.0



Benefits when replacing an open pipe

Material specification: EN 1.4305

Blowing properties at different pressures

Pressure (kPa)	200	400	600	800	1000
Blowing force (N)	5.3	10.3	16.1	21.1	26.4
Air consumption (Nm ³ /h)	37.4	72.0	107.5	143.7	176.0
Sound level (dB(A))	81.1	87.8	90.7	92.9	94.1