



## AIR NOZZLE

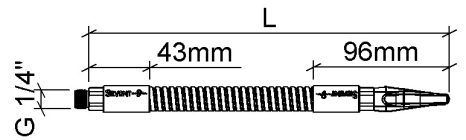
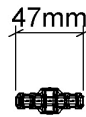
### SILVENT 9002W-S-200

Item number: 90020169621, 90020269621

SILVENT 9002W-S-200 - 9002W-S-500: nozzle mounted on a bendable stainless steel FlexBlow hose that keeps the desired position, even when blowing at high pressure. Available in 4 different standard lengths. The FlexBlow hose has a 1/4" male connection thread. Otherwise, the same performance as 9002W-S.

#### Technical data

Replace open pipe Ø (mm)	6
Blowing force (N)	5.5
Air consumption (Nm <sup>3</sup> /h)	28
Sound level (dB(A))	78
Nozzle technology	Slot
Material (nozzle)	1.4404 (316L)
Connection	G 1/4"
Connection type	Male
Weight (g)	246
Max temp (°C)	260
Max op. pressure (MPa)	1.0



Silvent 9002W-S-200	L=253mm
Silvent 9002W-S-300	L=353mm
Silvent 9002W-S-400	L=453mm
Silvent 9002W-S-500	L=553mm

#### Benefits when replacing an open pipe

Replace open pipe Ø (mm)	6	
Noise reduction	24 [dB(A)]	81%
Energy savings	39 [Nm <sup>3</sup> /h]	58%

Material specification: EN 1.4301, PTFE, CU, EN 1.4404